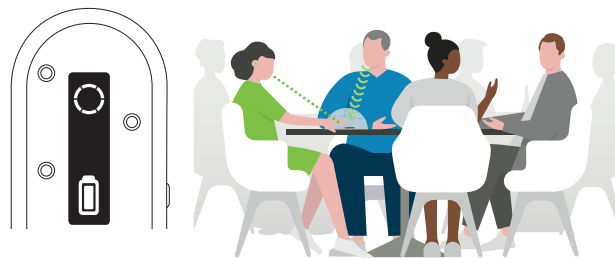


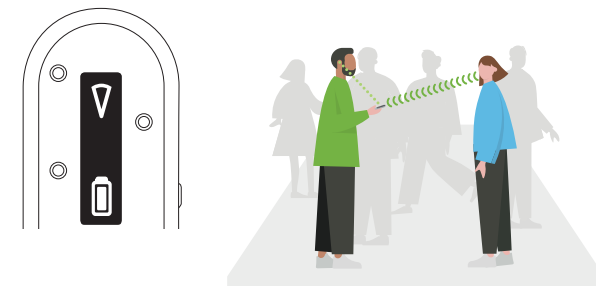
4

Table | Tisch | Table | Tafel



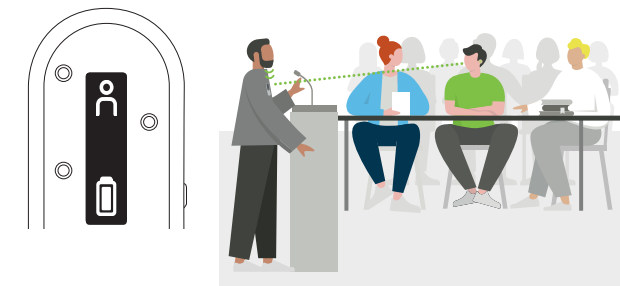
5

Pointing | In der Hand | Dans la main | In de hand



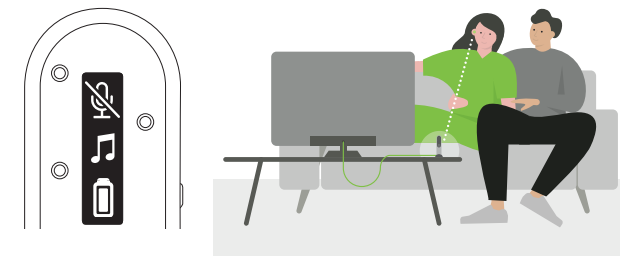
6

Presenter | Sprecher | Locuteur | Spreker



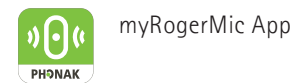
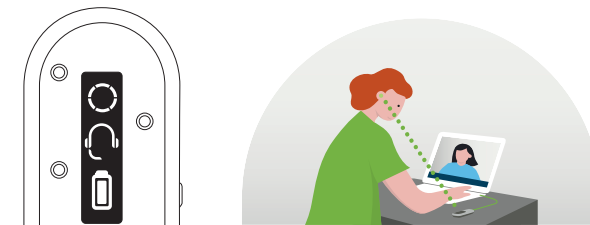
7

TV | Fernsehen | TV | Televisie



8

Online call | Internet Anruf | Appel en ligne | Online bellen



The Apple App Store logo is a trademark of Apple Inc.
The Google Play store logo is a trademark of Google LLC.



For further information, please refer to the User Guide. | Weitere Informationen zur Anwendung finden Sie in der Gebrauchsanweisung. | Pour plus d'informations, veuillez vous référer aux instructions d'utilisation. | In de gebruiksaanwijzing vindt u meer gedetailleerde informatie.

www.phonak.com/roger-on

Models:
Roger On V2
Roger On iN V2



Manufacturer:
Sonova Communications AG
Herrenschwandweg 4
CH-3280 Murten
Switzerland
www.phonak.com

sonova
HEAR THE WORLD

PHONAK
life is on

A Sonova brand

Roger On™

Quick setup guide | Schnellstartanleitung
Guide d'installation rapide | Snel aan de slag

roger

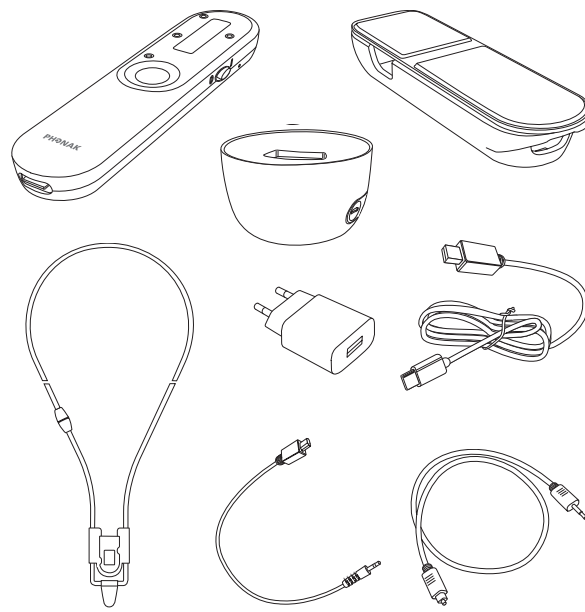


029-3360-49/V1.00/2022-10/dr © 2022 Sonova AG All rights reserved



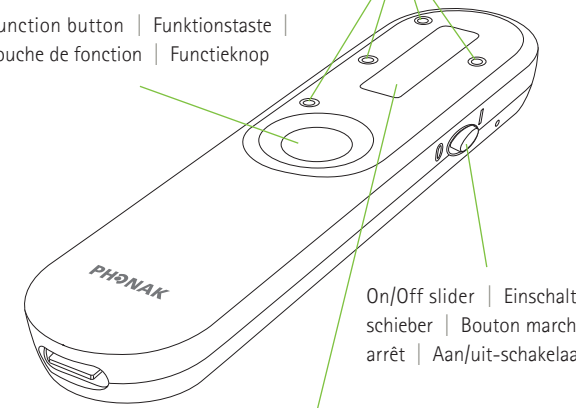


Content | Inhalt | Contenu | Inhoud



Function button | Funktionstaste |
Touche de fonction | Functieknop

4 microphones | 4 Mikrofone |
4 microphones | 4 microfoons



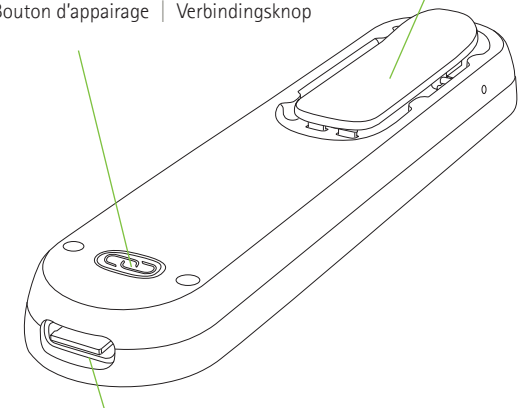
On/Off slider | Einschalt-
schieber | Bouton marche/
arrêt | Aan/uit-schakelaar

Display | Anzeige | Écran | Scherm

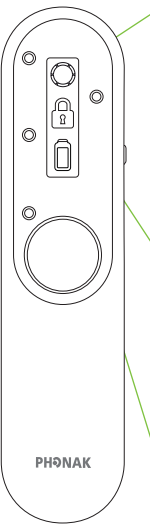


Connect button | Verbindungstaste |
Bouton d'appairage | Verbindingsknop

Clip



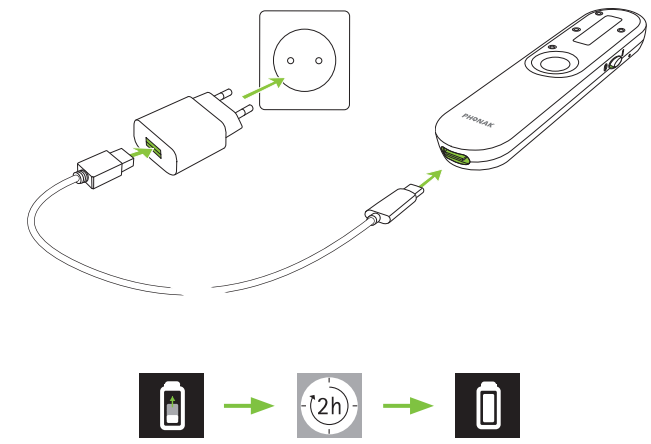
Charging input | Ladeanschluss |
Prise de recharge | Charging input



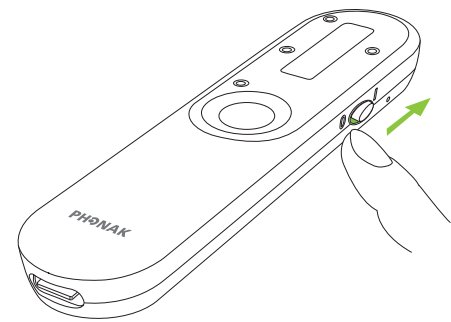
- Table | Tisch | Table | Tafel
- Pointing | In der Hand | Dans la main |
In de hand
- Presenter | Sprecher | Locuteur | Spreker
- Mute | Stumm | Muet | Dempen
- Automatic | Automatisch
- Locked | Gesichert | Barré | Op slot
- Audio
- Call | Anruf | Appel | Telefoongesprek
- ~8h
- ~4h
- Charge! | Laden! | Chargez! | Laden!



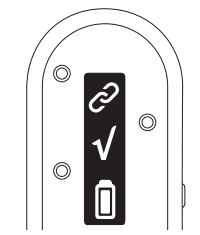
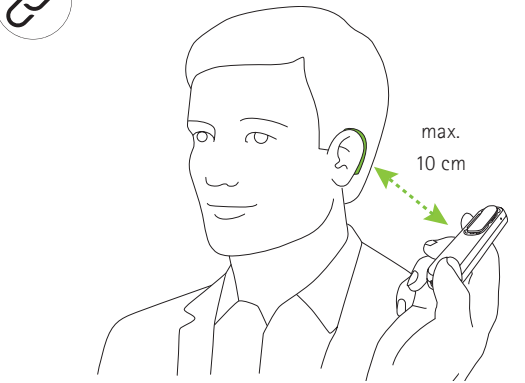
Charging | Aufladen | Charger | Laden



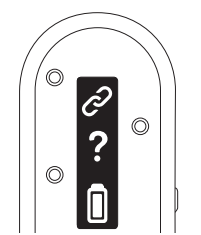
Switching on | Einschalten | Mettre en marche |
Inschakelen



Connecting | Verbinden | Connecter | Verbinden



Done | Erledigt |
Terminé | Gedaan



Go closer | Gehen Sie näher heran |
Va plus près | Kom dichterbij