

Roger Table Mic II

Quick setup guide | Schnellstartanleitung

Guide d'installation rapide | Snel aan de slag



roger

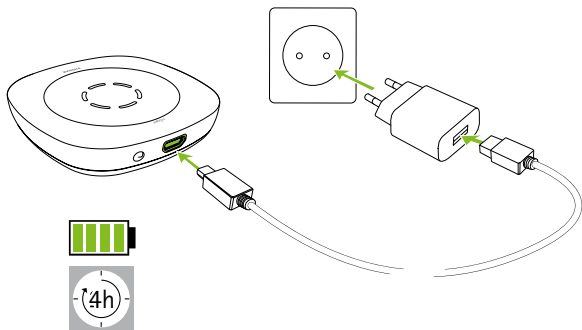


A Sonova brand

PHONAK
life is on

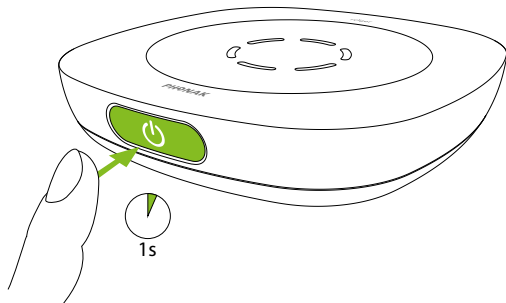
1

Charging / Aufladen
Charger / Laden

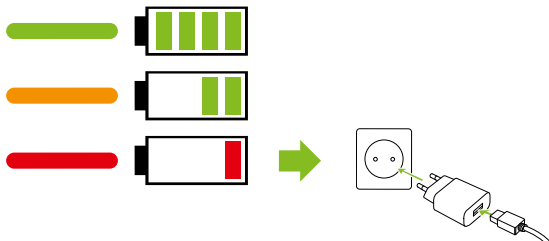


2

Switching on / Einschalten
Mettre en marche / Inschakelen



Switch on additional microphones one at a time.
Zusätzliche Mikrofone einzeln einschalten.
Allumer les microphones supplémentaires un à la fois.
Schakel eventuele extra microfoons één voor één aan.

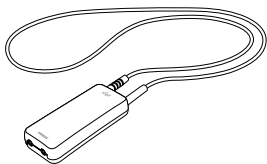


3

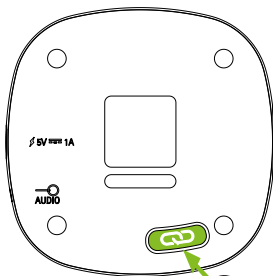
Connecting / Verbinden Connector / Verbinden



or
oder
ou
of



10 cm / 3 inch



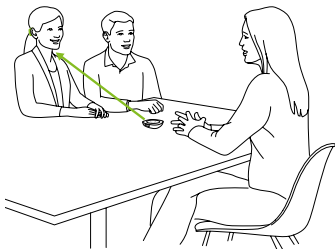
4

Microphone usage

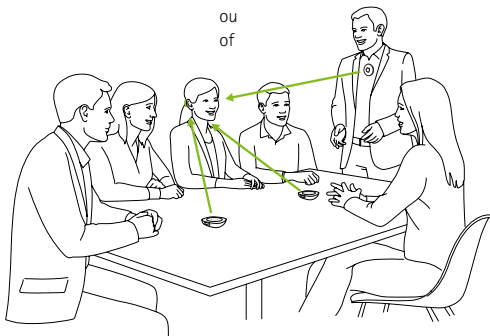
Anwendungsarten

Utilisation comme microphone

Hoe te gebruiken



or
oder
ou
of



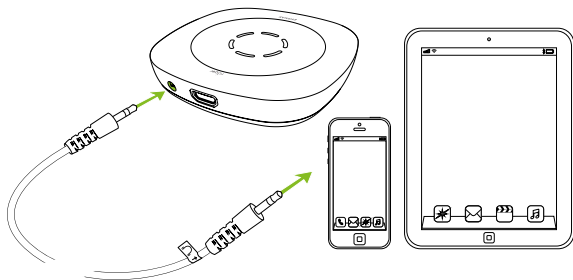
5

Use with an audio device

Verwendung mit einem Audiogerät

Utiliser avec un appareil audio

Gebruik met een audio-apparaat



6

For further information, please refer to the User Guide.
Weitere Informationen zur Anwendung finden Sie in der
Gebrauchsanweisung.

Pour plus d'informations, veuillez vous référer aux
instructions d'utilisation.

In de gebruiksaanwijzing vindt u meer gedetailleerde
informatie.





Phonak Communications AG
Herrenschwandweg 4
CH-3280 Murten
Switzerland

www.phonak.com

